

SJODIN *BILTMORE*

Mill Creek
Signature Homes



ELEVATION II

LOT J-52

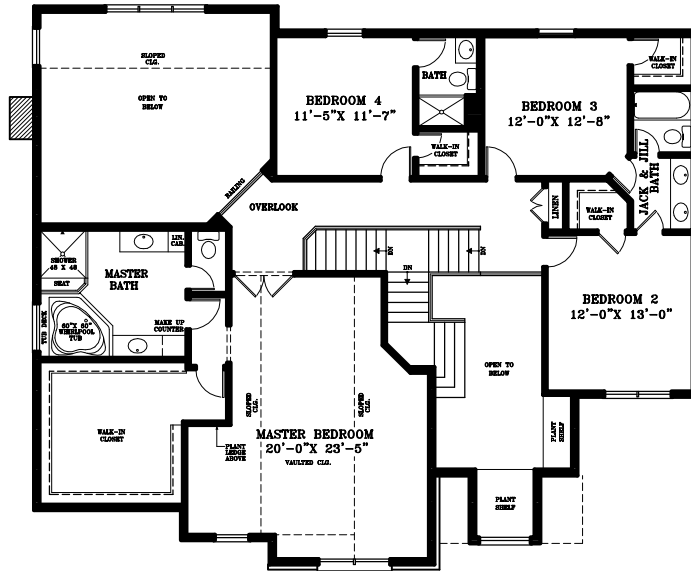
SJODIN CUSTOM HOMES, LLC
P.O. BOX 158
BATAVIA, IL 60510
PHONE (630) 232-4646 FAX (630) 232-9650



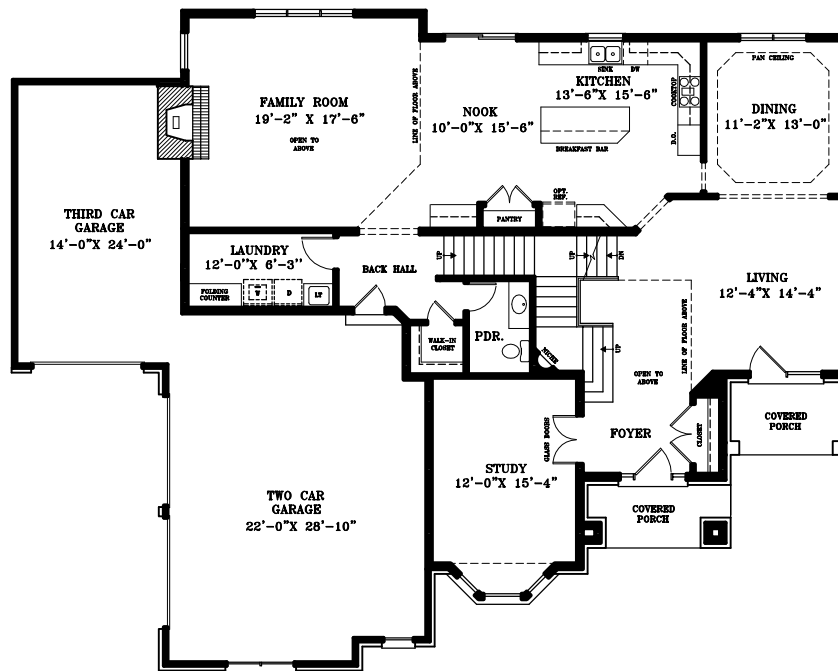
OLD WORLD CRAFTSMANSHIP

Mill Creek

Signature Homes



SECOND FLOOR
1,690 SQ. FT.



FIRST FLOOR
1,847 SQ. FT.

BILTMORE
3,537 SQ. FT.

LOT J-52



OLD WORLD CRAFTSMANSHIP